



Trees and Power Lines

What you need to know

Consumers Energy

Count on Us®

Sharing the Space

Trees, Power Lines and Communities

Trees are part of Michigan's natural splendor, providing summer shade and a golden glory in the fall. Trees are also a leading cause of electric outages.

Left unattended, trees or branches that grow near electric lines can fall and cause outages.

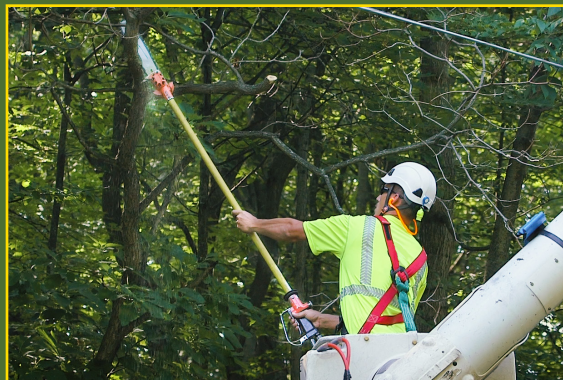
That's why it's important we maintain an effective line-clearing plan and educate our neighbors about smart planting practices.

By planting the right tree in the right place, you can help us reduce the number and duration of power outages.

Tree trimming improves electric reliability

We strive to provide safe, reliable electric service to our customers while making a sincere effort to minimize the impact where trimming is needed.

When trimming is necessary, our goals are to achieve adequate clearance and direct future growth away from electric lines, while adhering to arboriculture standards to help with tree healing.



We sometimes encounter trees that are dead, dying, or diseased and pose a risk to the operation of our system. These trees may be marked with a blue "A." We ask for your cooperation with our crews to address these hazardous trees.

Tree maintenance on easements

Since the late 1800s, we've been securing easements to install, maintain and expand overhead and underground electric lines on property not owned by us.

Lines can also be installed in road rights of way. All our easements follow state laws and business standards. While easements vary, they are legally tied to the title of the land and allow our facilities to remain in place regardless of future ownership.

Any tree growing within our easement, regardless of when it was planted, may eventually be trimmed or cut down to ensure reliable electric service. Arboriculture experts evaluate trees and their proximity to our lines to determine what trimming or other action might be needed in the future.

Did You Know?
Trees are involved in about 33% of all power outages.

Trees, Power Lines and Safety

Seven points to remember

1. Power lines are not insulated. If you touch a power line, you may be severely injured or killed.
2. Always assume a power line is energized and dangerous.
3. Do not cut down trees or branches near power lines. If you must do so, we recommend using a qualified contractor.
4. Stay clear of power lines when removing any object caught in a tree, such as a kite or balloon.
5. Stay at least 10 feet away from power lines when using a ladder.
6. Do not allow children to climb trees that are anywhere near overhead power lines.
7. Before you plant a tree, check to see if it could grow too close to overhead lines as it matures.

Safety First

If a tree branch breaks off and lands on an electric line, call us immediately at **800-477-5050**.

Do not touch the branch or wire.

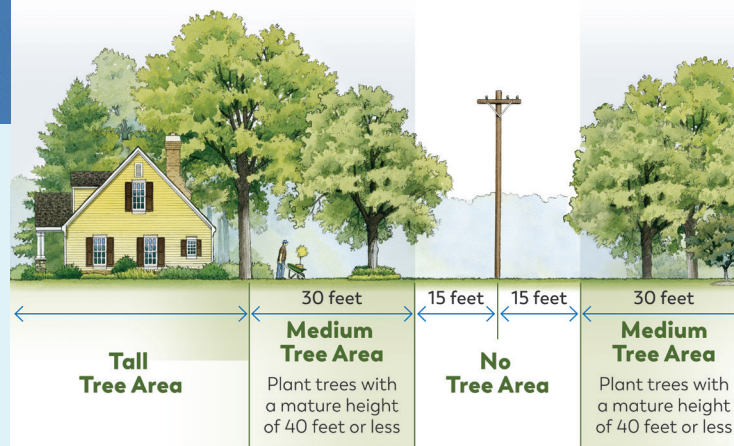
What You Plant Matters

Whether it's a stately silver maple or a regal red oak, it's important to make sure you plant the right tree in the right place.

Responsible planting practices not only help ensure the long-term health of your trees, but also that your trees reach their full potential. They also ensure the future safety and reliability of electric service for you and your neighbors.

Make a planting plan and verify the anticipated mature height and canopy spread of a tree before you put it in the ground. A good rule is to plant as many feet from the line as the expected height of the tree. Always plant trees away from overhead lines, so they don't contribute to power outages in the future.

Landscaping Requirements



Overhead Power Lines

Trees should not be planted near power lines.

Do not plant on the curb lawn before checking with your local municipality.

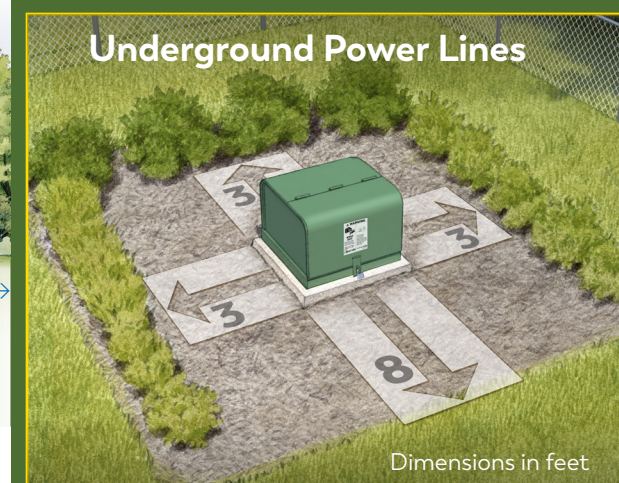
Do not plant vines on or near electric poles or guy wires.

Consult a local tree nursery before planting to determine the mature height and spread the tree may attain in your area.



For more information on planting visit:
ArborDayBlog.org/treeplanting/need-know-planting-right-tree-right-place

Underground Power Lines



Dimensions in feet

Use this illustration (above) as a guide for planting away from underground electric pad mount transformers. Planting away from transformers ensures they are accessible for inspection, maintenance, or repair. Don't assume underground lines aren't at risk from damage. Always contact MISS DIG 8-1-1 at least three working days prior to planting to have underground facilities marked.

More Resources



For resources on safe digging,
or to submit a request visit
missdig811.org or call 8-1-1.

For more Information or to place a non-emergency
request to our forestry department visit:

ConsumersEnergy.com/forestry

Or scan:



Consumers Energy

Count on Us®

This document applies to electric lines
with voltages between 14.4kV and 2.4kV.